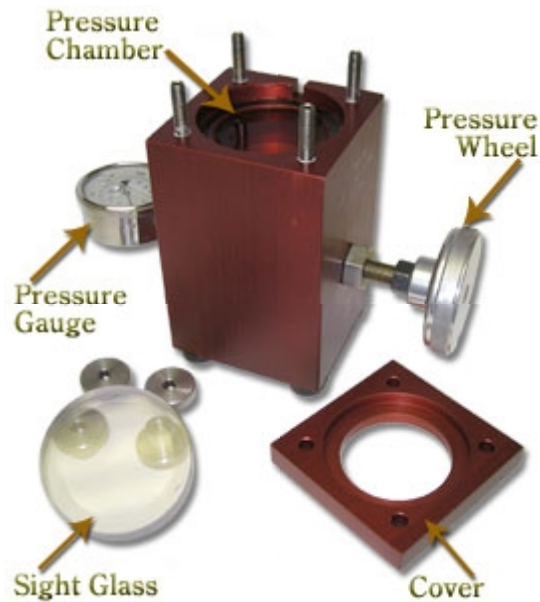




LWC Diver 125 Pressure Tester Operating Instructions

Please note that videos of the following operations may be accessed at www.lititzwatch.com



Setup

NOTE: Do not pressure test a watch until proper machine operation is understood and that no damage has occurred during shipping and handling.

- 1) Remove the four knurled knobs, the cover and the sight glass
- 2) Fill the chamber about half way with distilled water.
- 3) Screw in (tighten) the pressure wheel fully until it stops to expel air from the system.

- 4) Unscrew (loosen) the pressure knob fully.
- 5) Repeat steps 3 & 4 one more time to ensure that all air is expelled from the system.

First Time Use

- 1) Unscrew/retract the pressure wheel completely until it stops.
- 2) Using the supplied water bottle, fully fill the pressure chamber to the top with distilled water, until the water overflows out the overflow channel.
- 3) Replace the sight glass eliminating as much of the air as possible. Tilting the chamber slightly to the left while installing the site glass may aid in eliminating the air from the chamber. Replace top and the four knurled knobs. Tighten the knobs firmly but evenly. Tighten opposite corners simultaneously. If they are not adequately tightened, they will be MORE difficult to remove after the test
- 4) Tighten (clockwise) the pressure wheel to the required test pressure. Pressure should begin to rise almost immediately. If there is an air bubble in the chamber, it will be compressed as pressure starts to build. If the knurled knobs are not tightened sufficiently or evenly, water will leak from the system and pressure cannot be obtained.
- 5) Do not exceed 125 bar on the gage.
- 6) Release the pressure by unscrewing the pressure wheel until the gauge reads "0".
- 7) Remove the four knurled knobs, the cover, and the sight glass. If the sight glass is difficult to remove, apply slight pressure to the system by turning the pressure wheel clockwise until the glass is free.

Pressure Testing A Watch

- 1) Place the watch (with the crystal facing up) into the pressure chamber.
- 2) Unscrew/retract the pressure wheel completely until it stops.

- 3) Using the supplied water bottle, fully fill the pressure chamber to the top with clean water, until the water overflows out the overflow channel.
- 4) Replace the sight glass eliminating as much of the air as possible. Tilting the chamber slightly to the left while installing the site glass may aid in eliminating the air from the chamber. Replace top and the four knurled knobs. Tighten the knobs firmly but evenly. Tighten opposite corners simultaneously. If they are not adequately tightened, they will be MORE difficult to remove after the test
- 5) Tighten (clockwise) the pressure wheel to the required test pressure. Pressure should begin to rise almost immediately. If there is an air bubble in the chamber, it will be compressed as pressure starts to build. If the knurled knobs are not tightened sufficiently or evenly, water will leak from the system and pressure cannot be obtained.
- 6) After the required test time period, release the pressure by unscrewing the pressure wheel until the gauge reads "0".
- 7) Remove the four knurled knobs, the cover, and the sight glass. If the sight glass is difficult to remove, apply slight pressure to the system by turning the pressure wheel clockwise until the glass is free.
- 8) Remove the water using the water bottle (by drawing the water up into the bottle).
- 9) Warm the watch to 47° C using the Lititz Watch Company Preciso 47 heater and apply a drop of water to the center of the crystal to check for condensation inside the watch, per standard industry practice.

119 A NORTH BROAD ST • LITITZ PA • 17543 USA
PHONE: (717) 627 1227
WWW.LITITZWATCH.COM